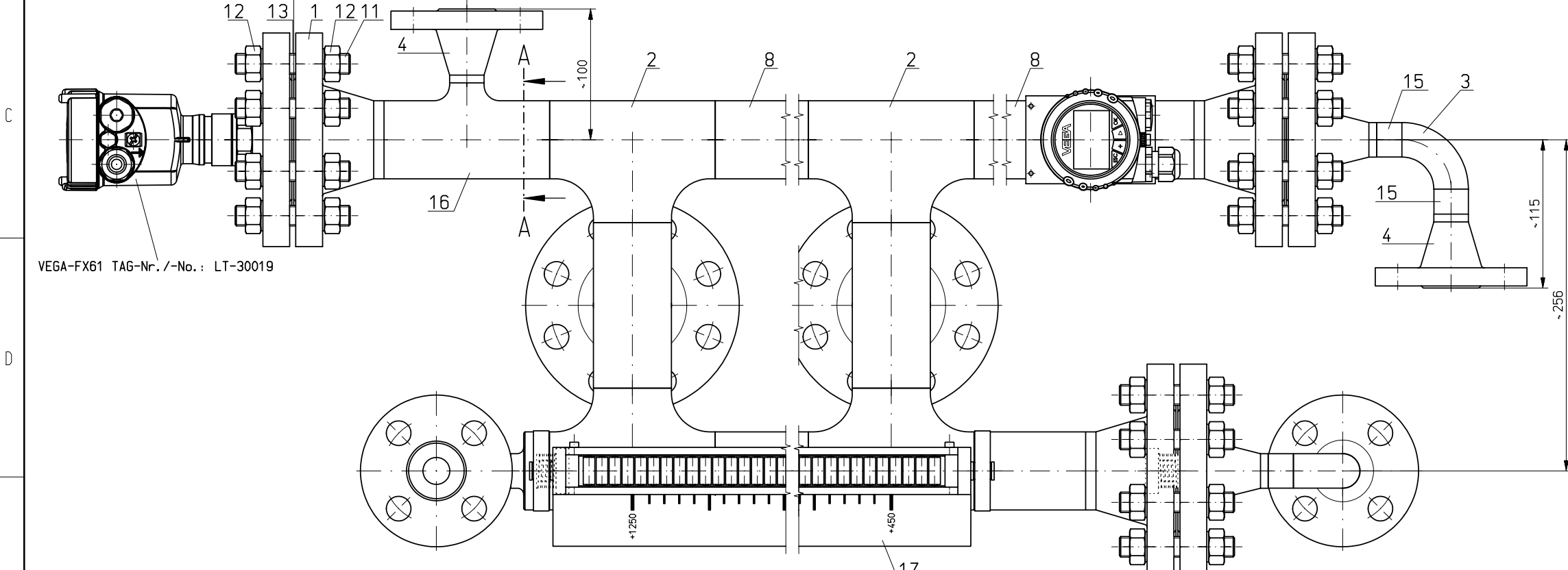


BYPASSGEFASS FÜR GEFOHRTE MICROWELLE
ANSICHT VON UNTEN SCHNITT A-A
BOTTOM VIEW GUIDED WAVE RADAR CHAMBER CUT A-A

BYPASSGEFASS FÜR GEFOHRTE MICROWELLE
ANSICHT VON OBEN
SCHNITT B-B
TOP VIEW GUIDED WAVE RADAR CHAMBER CUT B-B



VEGA-FX61 TAG-Nr. /-No.: LT-30019

Schweißangaben nach EN 288 Welding data acc. to EN 288	
Grundwerkstoff Base metal	14404 SS 316 L
Schweißzusatz Filler metal	AWS/ASME 5.9 ER 316L (SI) 14430
Schweißverfahren Welding process	141 (MIG) 141 (MIG)

Zulässige Betriebsdaten Max. operating parameters	
Max. zul. Druck (PSI) Max. operating pressure (PSI)	31 bar
Min./Max. Temperatur (TS) Min./Max. operating temperature (TS)	-25°C...+120°C
Prüfdruck (PT) Test pressure (PT)	PS x 1.5
DGR 97/23/EG Fluidgruppe PED 97/23/EC Fluidgroup	1

Pos.	Anzahl Quantity	Beschreibung Description	Sachnummer - Norm / Kurzbezeichnung Part- or Identification No.	Werkstoff Material	Ident. Nr. Identity No.
17	1	SKALA SCALE	40 x 20 x 1,5 mm ENGRAVED +450mm...+1250mm	1.4404 316 L	VSG
16	1	T-STÜCK MIT REDUZ. ABZWEIG REDUCED TEE	2" x 3/4" SCHED. 10S ANSI B16.9	1.4404 316 L	AREBL116200075
15	6	ROHR PIPE	Ø26,67 x 2,87 mm ANSI B 36.19	1.4404 316 L	ROEGL026028N00
14	2	VORSCHWEISSREDUZIERFLANSCH REDUCING FLANGE	2" x 3/4" 300 RF ANSI B 16.5	1.4404 316 L	FLEBLR207300
13	3	FLACHDICHTUNG GASKET	2" 300/600 RF ANSI B 16.21	GRAPHIT- LAMINAT	D1VGP126111060
12	48	SECHSKANTMUTTER HEAVY HEXAGON NUT	UNC 5/8" ANSI B 18.2.2	A194 7 HDG	VNSL7124000058
11	24	STIFTSCHRAUBE FULL THREAD STUD BOLT	UNC 5/8" x 3 1/2" ANSI B 18.2.1	A320 L7 HDG	VNSL7123058350
10	1	ZYLINDERSCHWIMMER FLOAT	ZTS250/3,1/120/630/R48	3.7035 Titanium	100092
9	1	MAGNETROLLENANZEIGE MAGNET ROLLER DISPLAY	MNAV_M800	1.4404 316 L	MNAV
8	4	ROHR PIPE	60,33 x 2,77 mm ANSI B 36.19	1.4404 316 L	ROEGL060027N00
7	2	FALLSCHUTZKAPPE PROTECTIVE CAP	GEN. HK_70023	PIFEE	DTKLP00700230
6	2	DAEMPFUNGSFEDER DAMPENING SPRING	DF 2 x 25 x 15 x 3mm	1.4310 301	VNE10114251530
5	1	ROHRBODEN REDUCING TOP	S1=2,87MM/S2=2,77MM HE_65092	1.4404 316 L	DTEGLP00650920
4	4	VORSCHWEISSFLANSCH WELDING NECK FLANGE	3/4" 300 RF ANSI B 16.5	1.4404 316 L	FLEBLVAR075300
3	3	ROHRBOGEN 90° LONG RADIUS ELBOW 90°	3/4" SCHEDULE 40S	1.4404 316 L	AREBL103007540
2	6	T-STÜCK MIT BLEICH ABZWEIG T-PIECE WITH EQUAL BRANCH	2" SCHED. 10S ANSI B16.9	1.4404 316L	AREBL109200S10
1	5	VORSCHWEISSFLANSCH WELDING NECK FLANGE	2" 300 RF ANSI B 16.5	1.4404 316 L	FLEBLVAR200300

Schutzbeschichtung außen / External Protective Coating

Gemäß / According to: NORSOK Standard M-501 Rev.05 and BP document No. BPN-M-501 Rev.04
 Beschichtungs-System Nr. / Coating system No.: 6B (Insulated corrosion resistant alloy equipment exposed to temperature < 120°)
 Oberflächen-Vorbereitung / Surface preparation: Sweep blasting with non-metallic and chloride free grit to obtain anchor profile of approximately 25 to 45 micron
 Beschichtungstyp / Coating type: 1 x 50 Micron coat epoxy primer
 1 x 300 Micron coat glass flake epoxy
 1 x 125 Micron coat urethane acrylate modified polysiloxane
 Deckschichtfarbe / Top coat colour: White, RAL Code 9002

! Magnetrollenanzeige, Schrauben, U-Scheiben, Muttern, Dichtungen, Flanschdichtflächen und die gravierte Skala werden nicht beschichtet !
! Magnetic roller display, bolting, gaskets, flange faces and graduated scale are left uncoated !

DGR L 97/23/EG
PED 97/23/EC

Kategorie II Modul A1
Category II Module A1

NACE MR0175 - 2003

Schulzwerk nach DIN 24 beachten / Copying of this document, and giving it to others and the use or communication of the contents thereof, are forbidden without express authority. Offenders are liable to the payment of damages. All rights are reserved in the event of the grant of a patent or the registration of a utility model or design.		Matzstab/Scale 1:2 Format/Size A1	
Bereit. Dwt.	Datum/Date	Name	Bemerkung/Title
Gepr. Chkd.	23.10.2006	MK	KSR BYPASS NIVEAUSTANDANZEIGER KSR MAGNETIC LEVEL GAUGE BNA 2_300_RF_M800_L60x2,77/L60x2,77_MNAV/VSG_ZTS250/3,1/120/630/R48_Ex
Zust. Rev.	Änderung Description	Datum Date	Name Name
		17.01.2007	MK
		01.12.06	MK
		30.11.06	MK
		22.11.06	MK

REV. No.	DESCRIPTION OF REVISION	ISSUE DATE	MADE BY	CHK'D BY	DISC. APPR.	PROJ. APPR.	CLIENT APPR.	REV. No.	DESCRIPTION OF REVISION	ISSUE DATE	MADE BY	CHK'D BY	DISC. APPR.	PROJ. APPR.	CLIENT APPR.
05	AS BUILT	13.02.07	MK	RE				04	AS BUILT	17.01.07	MK	RE			
								03	AS BUILT	01.12.06	MK	RE			
								02	ISSUED FOR APPROVAL	30.11.06	MK	RE			
								01	ISSUED FOR APPROVAL	22.11.06	MK	RE			

FIRST AFA NO _____
DATE _____

AKER KVÆRNER
Aker Kværner Offshore Partner AS

REGISTRATION CODES
FACILITY: - DWG SIZE: A1 SCALE: 1:2
DRAWING NO. PD - 032916 - D - 002
SHEET 1/1
REV. 05

Field for file specification (name)
Field for date and time (date)